

FibeAir[®] 1500HP

Next generation high-capacity
long-haul wireless solutions



FibeAir 1500HP, with its inherent advantages, is an optimal solution for network operators looking to offer high capacity long-haul applications and converged data, voice and video services in an economical way.

- High transmit power
- Longer distances
- Smaller antennas
- N+1 Carrier protection
- Low installation costs
- Built-in diversity
- IF combining
- Enhanced resiliency
- End-to-end solution
- Frequency Range of 6-11 GHz

The first split-mount radio truly optimized for long-haul applications



Introducing FibeAir® 1500HP

Ceragon's innovative FibeAir 1500HP was designed as an ideal wireless networking solution for end-to-end long distance connectivity allowing the deployment of voice and data services for fixed and mobile backhaul networks. Quickly and easily deployed, the FibeAir 1500HP system represents an economical alternative to fiber optic lines and is a highly reliable point-to-point backbone transmission system.

Focused on Optimization

With key technological advancements, FibeAir 1500HP is the first split-mount radio to be truly optimized for long-haul applications. Ceragon's unique embedded space diversity with dual receiver architecture, extremely high transmit power and IF combining algorithm guarantee superior performance and errorless transmission. For operators this means a reliable solution that can use less equipment and smaller antennas, providing substantial savings on initial investments and operational expenditures. Packed with the latest generation technology and cost-saving features, FibeAir 1500HP is your best choice for effective long-haul telecommunications.

Applications

Mobile and Fixed Networks

Quickly deployed and optimized for long-haul applications, FibeAir 1500HP is ideal for expansion to rural areas. With ultra high-power, FibeAir 1500HP uses smaller antennas providing a significant advantage for operators as well as reducing environmental impact. Ceragon's backbone solution provides more capacity for more users, cell sites and bandwidth-hungry applications. The system can be easily expand to (N+1) x155Mbps capacity using the exciting equipment. Our system offers smooth migration from PDH to SONET/SDH networks and next generation IP, with capacities of nxDS3, nxE1/T1, FE, GbE and (N+1) x155Mbps. Applications include voice, Internet, PABX, DSL, video, VoIP and others.

Broadcast Networks

With ultra-long distance radio hop capability, FibeAir 1500HP is an economic choice for cross-country digital broadcast connectivity. The scalability and reliability of FibeAir solutions are ideal for high-quality transport of contribution and distribution services. Applications include Digital Video Broadcast, TV, radio and telemedicine.

Government & Emergency Services

Ceragon's quality products meet the high-level demands of government customers by providing rapidly deployed secure and long distance transmission, in a compact, light weight, scaleable solution. Applications include military deployments over long distances, border-to-headquarter communication, disaster recovery, temporary installations, surveillance, and monitoring.

Private Networks

FibeAir 1500HP provides high-capacity connectivity for enterprise LAN and PBX systems. Its hardware optimization significantly reduces equipment requirements for low frequency long haul radio hops, which results in lower network, operation and maintenance costs. FibeAir 1500HP is ideal for utility operators, corporate enterprises, education campuses, hospitals, banks and others. Applications include IP LAN connectivity, (FE, GbE), VoIP, client-server application, remote storage, video conferencing, TDM services, infrastructure redundancy and more.

Key Features

- Frequency range of 6-11 GHz
- Ultra high transmit power: 29/30 dBm
- Innovative digital IF combiner
- Dual receiver architecture
- Configurable capacity: from 45 Mbps to $(N+1) \times 155\text{Mbps}$
- Variety of interfaces for TDM/IP PDH/SDH/SONET
- N+1 Carrier protection
- Configurable modulation: QPSK/16/32/64/128/256 QAM
- Configurable channel bandwidth: 10/14/25/28/29/30/40 MHz
- Built-in XPIC (Cross Polarization Interference Canceller) for Co-Channel Dual Polarization
- Split-mount & all-indoor installation using same hardware
- Simple and flexible installation
- Easy system expansion
- Compliant with ETSI, FCC, ITU-T, ITU-R, and IEEE standards and frequency plans
- ATPC (Automatic Tx Power Control)

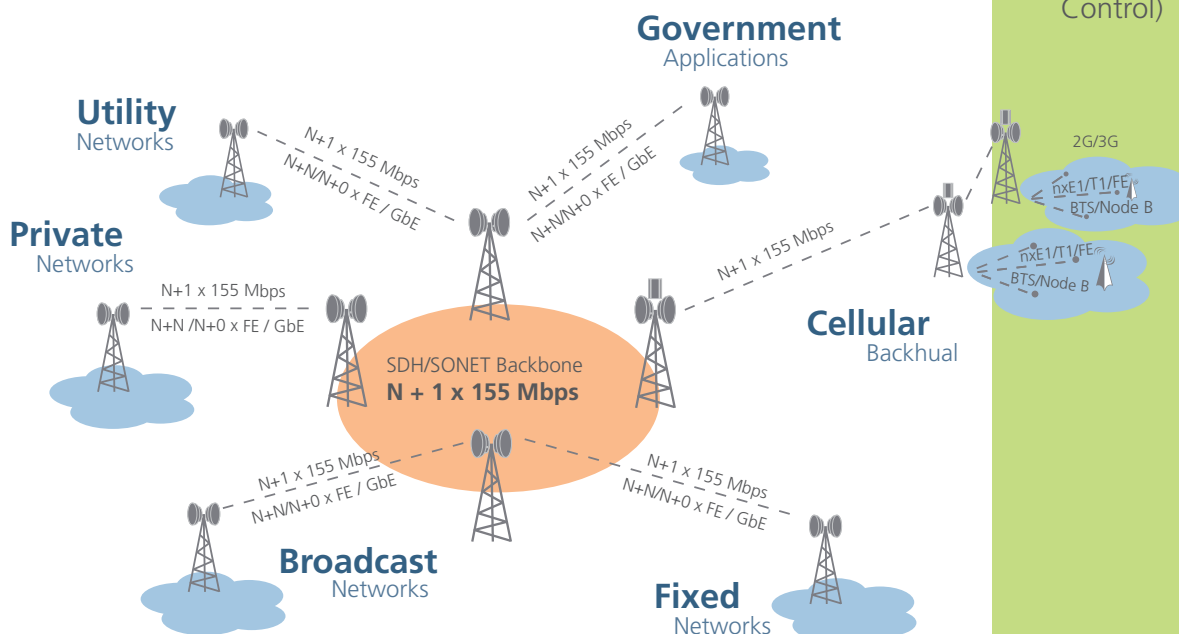
System Overview

Unparalleled Flexibility

FibeAir 1500HP, member of the FibeAir family, provides wireless high-capacity data transmission over long distances, in a wide variety of network capacities, frequencies and configurations. FibeAir 1500HP operates in the frequency range of 6-11 GHz and can be installed outdoors, in a simple split-mount configuration, or all-indoor in a standard rack. Capacities can be easily upgraded from 45 Mbps up to $(N+1) \times 155\text{ Mbps}$.

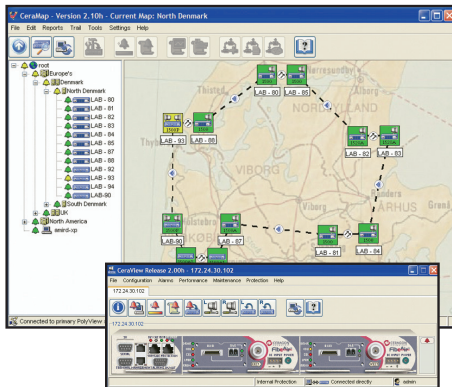
Unique Traffic Protection

For maximum versatility and transmission efficiency, the Radio Frequency Unit (RFU) is equipped with space diversity capability. The unit includes two receivers and one transmitter, an IF combining algorithm and extremely high transmit power. The dual receivers and IF combining algorithm, provide reliable and enhanced diversity protection against the multipath phenomenon. In a 1+1 Hot Standby link with space diversity, the system consistently transmits error-free data, and retains its space diversity capability. With its reliable fiber-like transceiving quality and protection capabilities, FibeAir 1500HP is a dependable telecommunications solution for different network topologies, such as chain, ring, mesh, and star.



End-to-End Network Management

Ceragon provides state-of-the-art remote management based on SNMP. The Ceragon management applications are written in Java code and enable management functions at both the element and network levels. The applications run on Windows 2000/2003/XP/Vista and Sun Solaris.



CeraView® is Ceragon's SNMP-based EMS (Element Management System) that enables the operator to perform element configuration, RF, Ethernet and TDM performance monitoring, remote diagnostics, alarm reports and more. CeraView integrates with different 3rd party NMS (Network Management System) platforms to provide end-to-end system management.

PolyView™ is Ceragon's NMS server that includes CeraMap, with a powerful user-friendly client graphical interface. PolyView can be used to update and monitor network topology status, provide statistical and inventory reports, download software and configure elements in the network. In addition, it can integrate with Northbound NMS platforms, to provide enhanced network management.

Ceragon Networks Ltd.

Ceragon Networks Ltd. (NASDAQ and TASE: CRNT) is a leading provider of high capacity wireless backhaul solutions that enable fiber-like connectivity for SONET/SDH networks, next generation IP-based networks and hybrid networks. Ceragon's FibeAir® family of products support all wired and wireless access

technologies and address Service Providers' need to cost-effectively build-out and scale their networks to meet increasing demands for bandwidth and premium services. Ceragon's solutions are deployed by more than 150 service providers of all sizes, as well as in hundreds of private networks, in 85 countries.

Ceragon Networks

Corporate Headquarters

Ceragon Networks Ltd.
Tel Aviv, Israel
Tel: +972-3-645-5733
Fax: +972-3-645-5499

EMEA

Ceragon Networks
(UK) Limited
Redditch, UK
Tel: +44-(0)-1527-591900
Fax: +44-(0)-1527-591903

Asia Pacific

Ceragon Networks APAC
(Singapore) Ltd.
Singapore
Tel: +65-6339-3110
Fax: +65-6339-1310

North America

Ceragon Networks, Inc.
New Jersey, USA
Tel: +1-201-845-6955
Fax: +1-201-845-5665
Toll free: 1-877-FIBEAIR

Latin America

Ceragon Networks,
S.A. de C.V.
Mexico D.F. Mexico
Tel: +52-55-5663-2914
Fax: +52-55-5663-2841